



# AGROECOLOGY PARTNERSHIP



## DELIVERABLE 3.4

# Project website

Reproduction is authorised provided the source is acknowledged.

© AGROECOLOGY Partnership, 2024

## Technical References

Deliverable No.	3.4
Dissemination level <sup>1</sup>	PU – Public
Work package	3
Lead beneficiary	EV ILVO
Version	1.0
Due date of deliverable	June 2024
Actual submission date	June 2024

## Versions

Version	Person	Partner	Date
1	Eline De Wispelaere, Nikki De Clercq	EV ILVO	27/06/2024

**Approved by the Coordinator on: 28.06.2024**

**Disclaimer.** Funded by the European Union. Views and opinions expressed are however those of the author(s) only and do not necessarily reflect those of the European Union or European Research Executive Agency (REA). Neither the European Union nor the granting authority can be held responsible for them.



## TABLE OF CONTENTS

Summary.....	3
1 AGROECOLOGY Partnership website.....	4
1.1 Screenshots of Homepage.....	4
1.2 Screenshots of ‘About’ page.....	7
1.2.1 What we do.....	7
1.2.2 Who we are.....	9
1.3 Screenshot of ‘Funding Opportunities’ page.....	9
1.4 Screenshot of ‘Actions’ page.....	10
1.5 Screenshot of ‘Resources’ page.....	10
1.6 Screenshots of ‘News & Events’ page.....	11
1.6.1 News.....	11
1.6.2 Events.....	11
1.7 Screenshot of ‘Contact’ page.....	12

## Summary

Deliverable 3.4 “Project website” provides screenshots of the AGROECOLOGY Partnership website, as a proof of launch in June 2024 (M6). This deliverable is part of WP3 (Dissemination, Exploitation and Communication, DEC), which aims to develop and implement an integrated strategy and plan for comprehensive dissemination and communication activities that will give visibility to the efforts of the AGROECOLOGY Partnership and maximise the impact of key exploitable results.

The website will act as the primary communication channel of the AGROECOLOGY Partnership and is accessible through [www.agroecologypartnership.eu](http://www.agroecologypartnership.eu). It is designed to provide general information on the overall vision, objectives, activities and partners involved in the Partnership. The website will consist of a calendar with past and upcoming events, and a long-term storage facility for publicly available consultation and dissemination material, such as the SRIA, flyers, reports, presentations, policy briefs, etc. Furthermore, it will contain information about calls and funded research projects. Each funded research project will have an individual webpage showcasing project objectives, and results and dissemination material e.g. scientific publications, videos, etc. In addition, the website will integrate links to various platforms (e.g. AGROECOLOGY Collaborative Knowledge Platform of the Network), tools (e.g. for monitoring) and websites of related EU initiatives (e.g. Green Era Hub). The website provides stakeholders with the opportunity to sign up for the biannual newsletter and to reach out to us via the contact form. Finally, links to the AGROECOLOGY Partnership social media accounts on [X](#), [LinkedIn](#) and [YouTube](#) can be found in the website footer. The website will be continuously updated throughout the Partnership runtime. A clean and modern look will provide an attractive way to inform the Partnerships’ stakeholders on activities and outputs.

## 1 AGROECOLOGY Partnership website

The official AGROECOLOGY Partnership website currently (M6) consists of the following pages:

- Homepage
- About
- Funding opportunities
- Actions
- Resources
- News & Events
- Contact us

As the Partnership implements a dynamic strategy, the website will continuously be updated and improved, throughout the project runtime.

### 1.1 Screenshots of Homepage

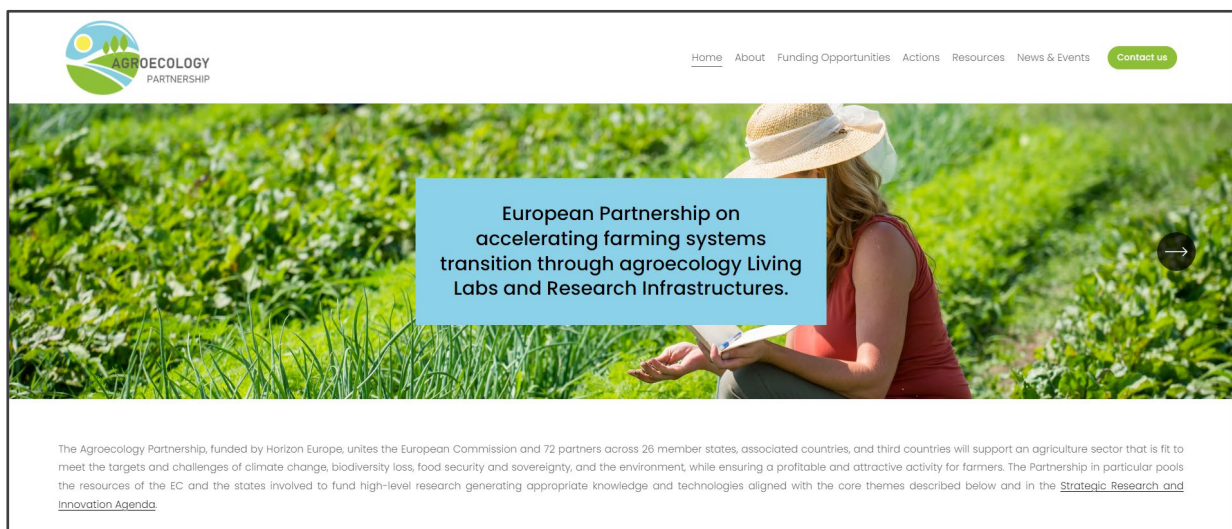


Figure 1: Homepage (top) – AGROECOLOGY Partnership introduction.

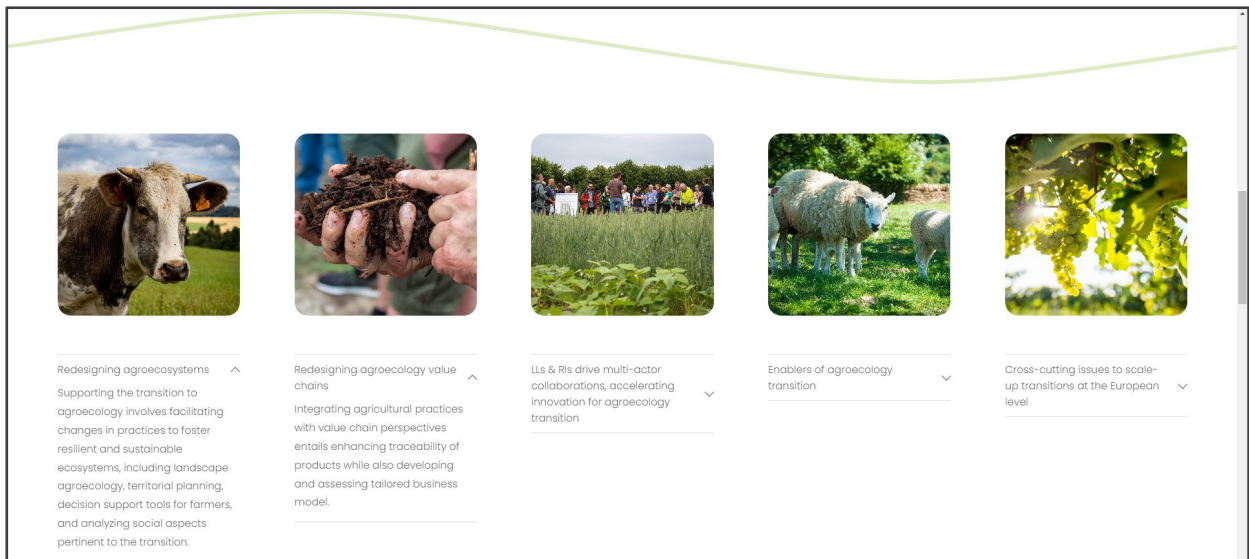


Figure 2: Homepage – AGROECOLOGY Partnership core themes.

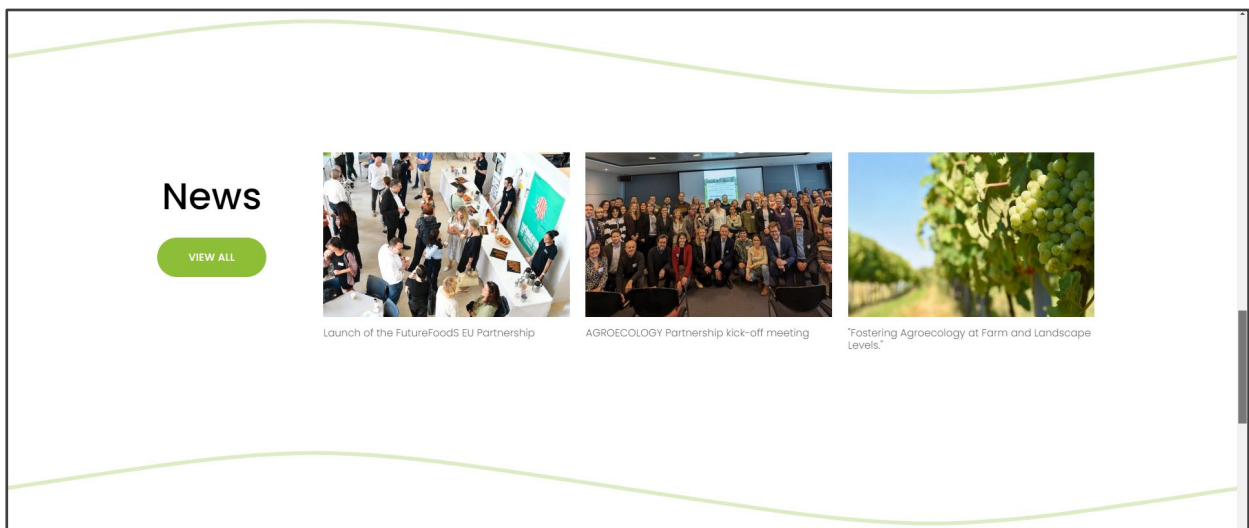


Figure 3: Homepage – News items of the AGROECOLOGY Partnership and more.



Figure 4: Homepage – Upcoming events of the AGROECOLOGY Partnership and more.

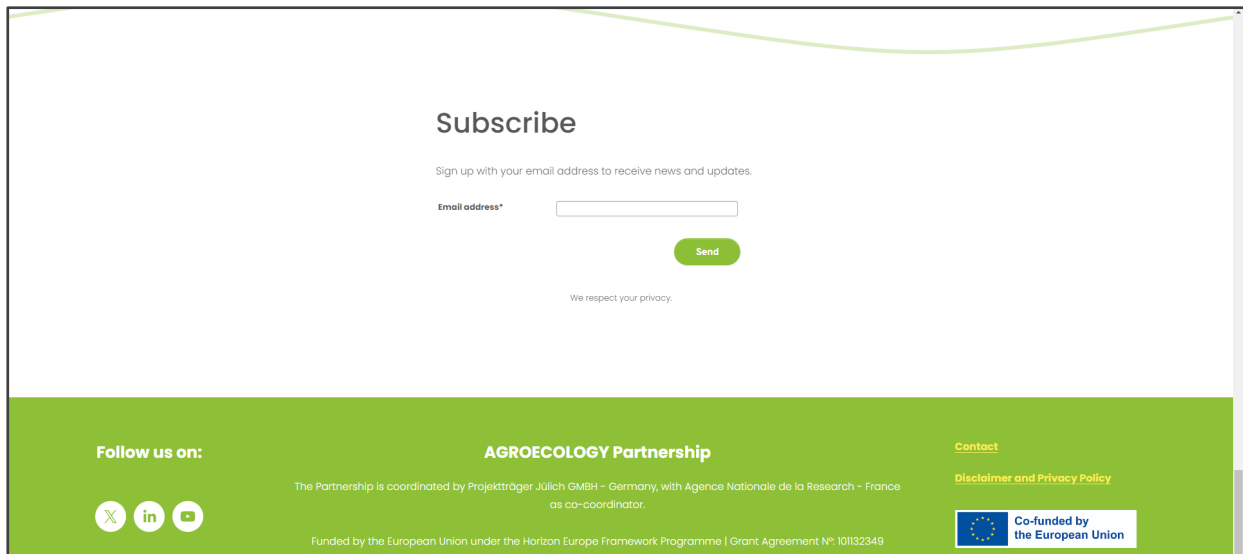


Figure 5: Homepage (bottom) – AGROECOLOGY Partnership subscription to newsletter section and footer with links to the Partnership social media accounts on X, LinkedIn and YouTube.

## 1.2 Screenshots of 'About' page

### 1.2.1 What we do



Figure 6: About – The AGROECOLOGY Partnership mission.

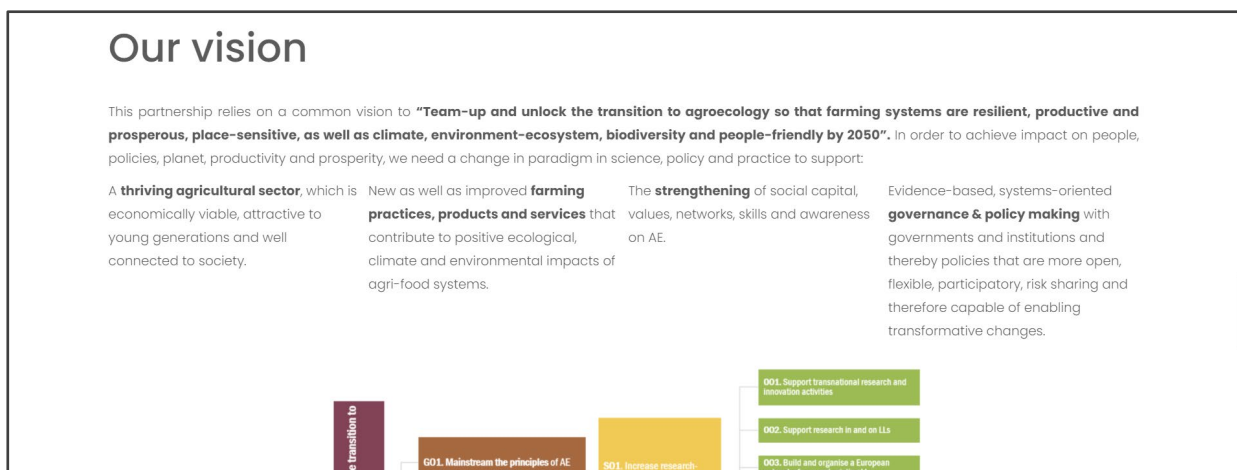


Figure 7: About – The AGROECOLOGY Partnership vision.



Figure 8: About – The expected impact of the AGROECOLOGY Partnership.

### 1.2.2 Who we are

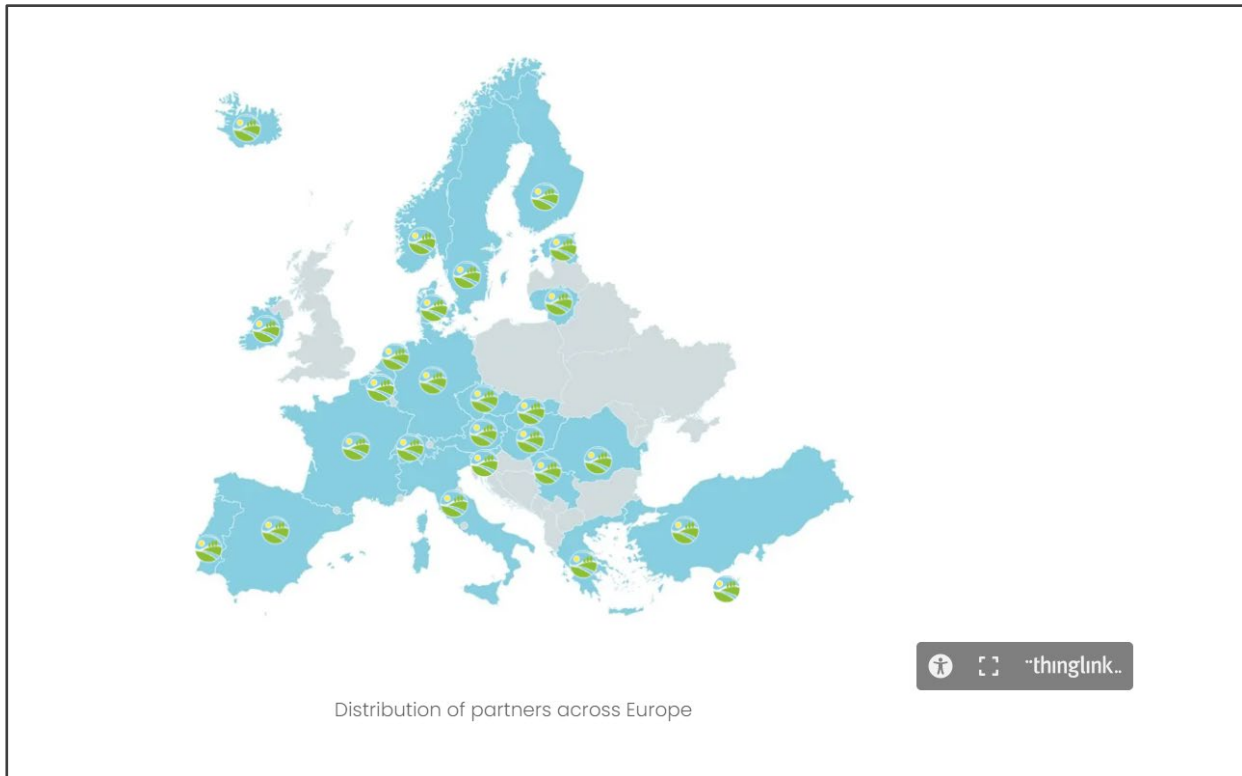


Figure 9: About – The partners of the AGROECOLOGY Partnership (thinglink interactive map).

### 1.3 Screenshot of ‘Funding Opportunities’ page

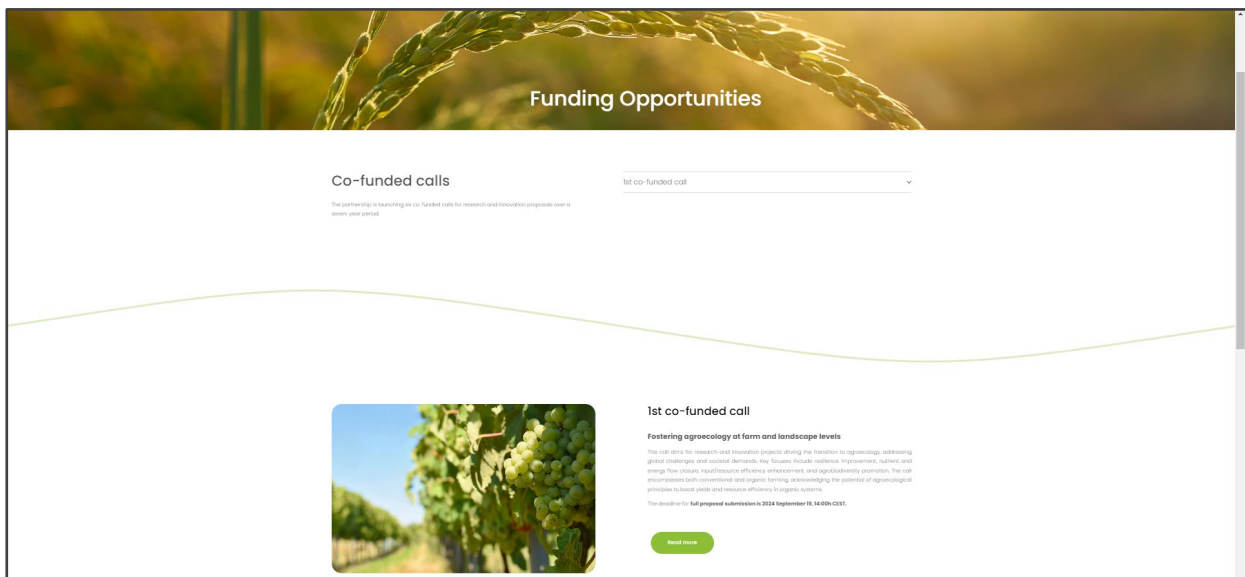


Figure 10: Funding opportunities – Example 1<sup>st</sup> co-funded call (current stage: open until September 19, 2024).

## 1.4 Screenshot of 'Actions' page

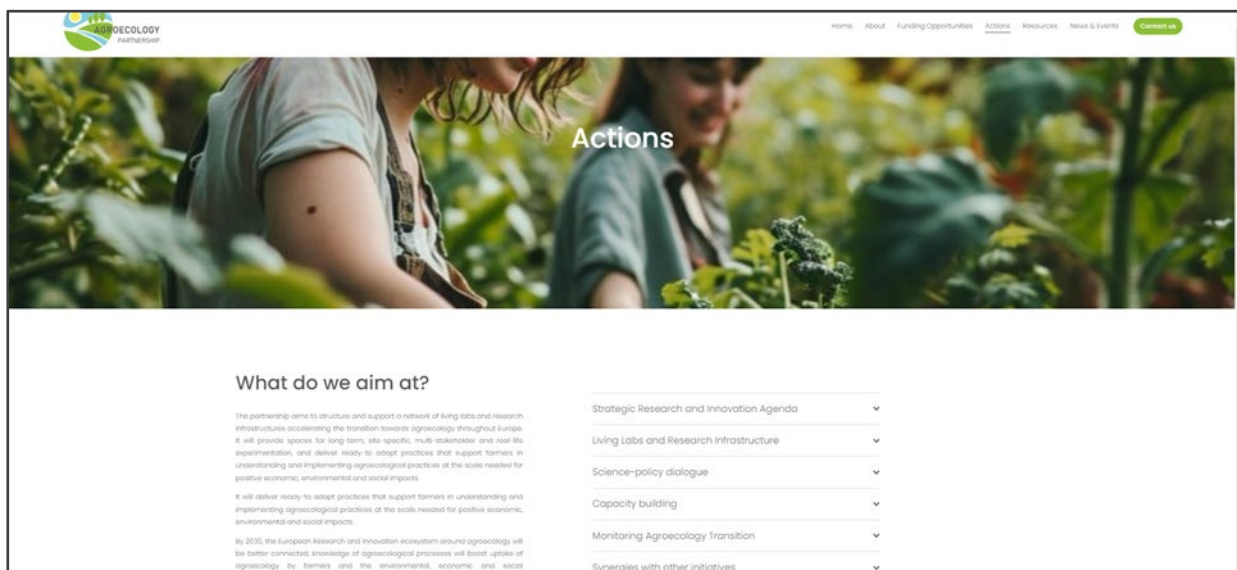


Figure 11: Actions – SRIA, LLs & RIs, science-policy dialogue, capacity building, monitoring AE transition and synergies with other initiatives.

## 1.5 Screenshot of 'Resources' page

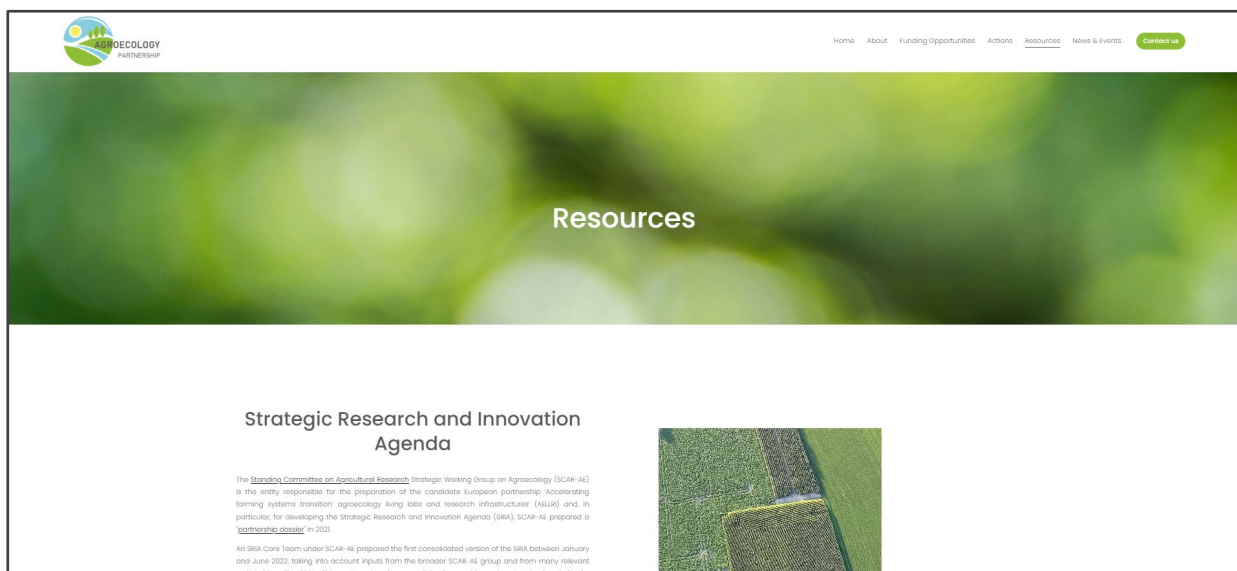


Figure 12: Resources – Examples SRIA, 1st co-funded call documents and communication kit.

## 1.6 Screenshots of 'News & Events' page

### 1.6.1 News

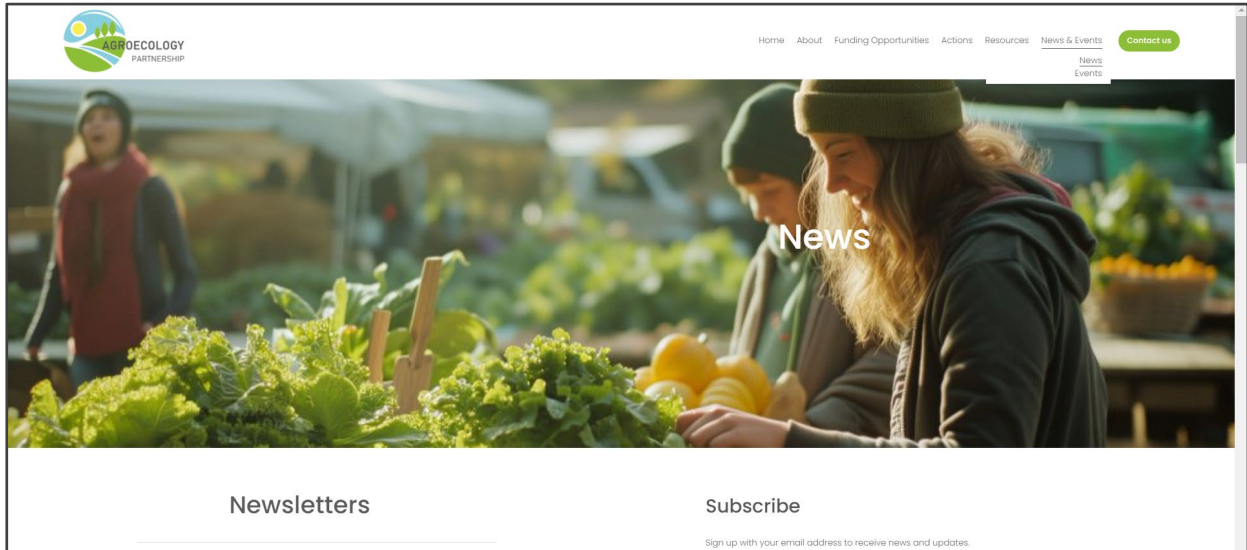


Figure 13: News – Newsletters and news items archive.

### 1.6.2 Events

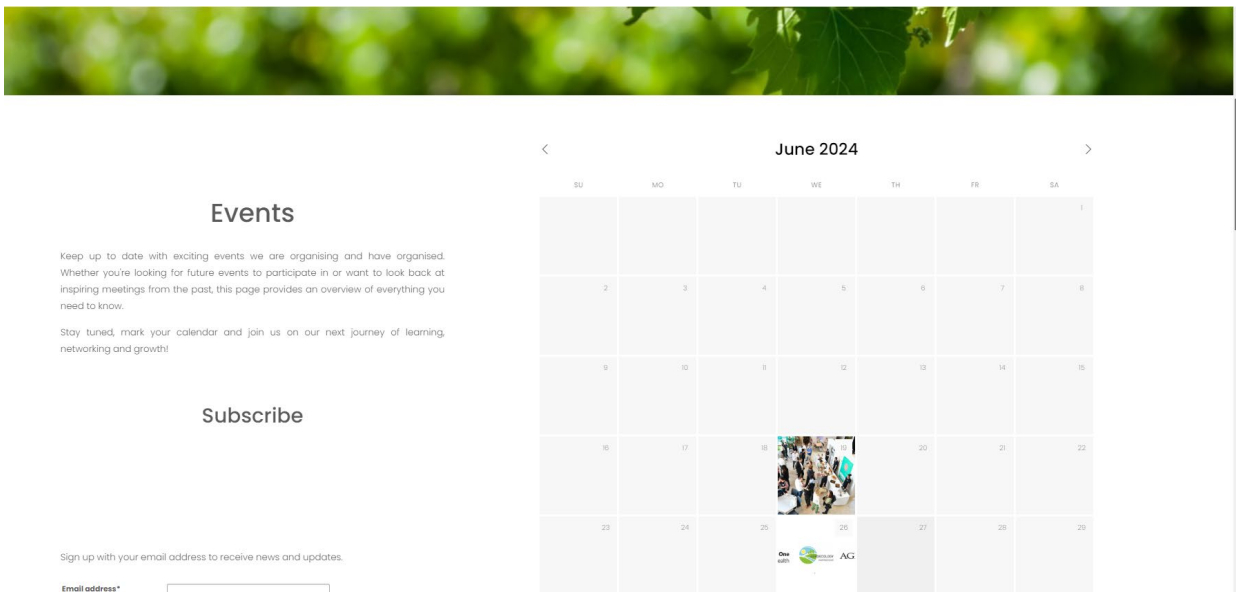
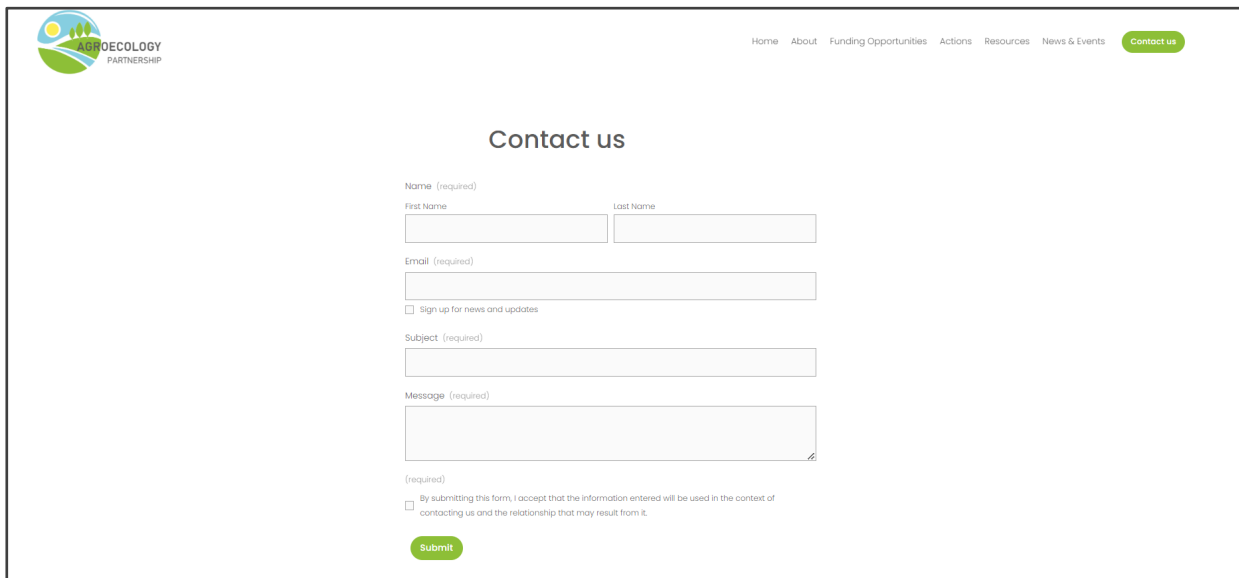


Figure 14: Events – Calendar with previous and upcoming events of the AGROECOLOGY Partnership and more.

## 1.7 Screenshot of 'Contact' page



The screenshot shows the 'Contact us' page of the Agroecology Partnership website. The page features a navigation menu with links for Home, About, Funding Opportunities, Actions, Resources, News & Events, and a highlighted 'Contact us' button. The main content area is titled 'Contact us' and contains a form with the following fields:

- Name (required)**: Split into 'First Name' and 'Last Name' text input fields.
- Email (required)**: A single text input field.
- Sign up for news and updates
- Subject (required)**: A text input field.
- Message (required)**: A large text area for the message.
- By submitting this form, I accept that the information entered will be used in the context of contacting us and the relationship that may result from it.

A green 'Submit' button is located at the bottom of the form.

Figure 15: Contact form – Applications are submitted to [agroecology.ps@ilvo.vlaanderen.be](mailto:agroecology.ps@ilvo.vlaanderen.be).